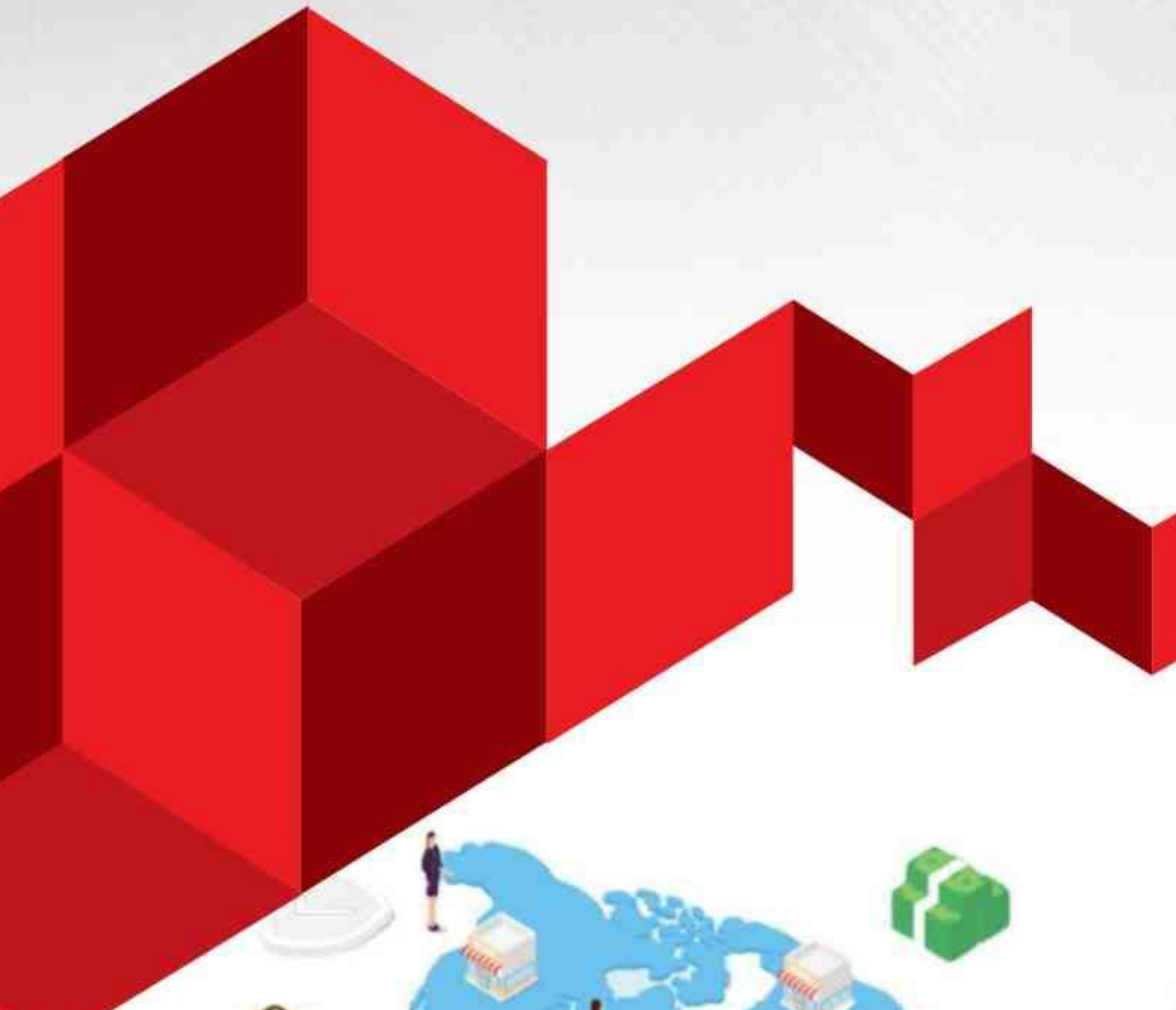


BUSINESS PROCESS AUTOMATION (BPA)

PRODUCT **PORTFOLIO**





EMERGENCY MEDICAL SERVICE (EMS)

INTRODUCTION

Ambulance is one component of Emergency Medical Services (EMS). Ambulance is an emergency transportation tool used by hospitals or related agencies that help people who need medical assistance. Ambulances are equipped with medical equipment and medical personnel and are used to transport patients from certain locations to other locations.

With current technological developments, applications in smartphones and the internet can be synergized with the need for an accurate prehospital emergency service system that is able to provide information on emergency response needs quickly and anytime and anywhere.

The Emergency Medical Service (EMS) which was built using this technology aims to:

1. Improving the quality of ambulance services, especially for emergency cases in hospitals.
2. Increasing public confidence in pre-hospital emergency services.
3. Increased internal control in ambulance services, especially for emergency response cases.
4. Effectiveness and efficiency of emergency response services.
5. Obtain data for analysis in order to improve services in the ER.

WHY IS EMERGENCY MEDICAL SERVICE (EMS) NEEDED?

Emergency services are one of the important elements of public services in order to improve the quality of life of the community.

01



02

Improvement in emergency medical service by providing patients with timely access to emergency medical

Optimizing the referral system between health facilities while maintaining excellent protocols with other EMS agencies.

03

04

Innovative technology that will support the dual objectives of patient-centered care and EMS staff safety.

OBJECTIVES



Emergency Button

Emergency button and ambulance booking service that makes it easier for patients.



Dispatch System

Call center and dispatch system.



Ambulance Position & Prehospital Care

Real time ambulance position and patient vital signs (prehospital emergency care) during patient transport to emergency room.



Monitoring from ER

Monitoring the status of the ambulance and the patient.



EMERGENCY MEDICAL SERVICE (EMS)

HOW IT WORKS?



Panic Button

For Patient/Patient Guardian

This system is activated when patient/patient guardian who is experiencing an emergency or non-emergency situation, calls the service to request an ambulance. This request can be made by making phone calls or using panic button or mobile application.



Dispatch Management

For Call Center/Dispatcher

Call Center/Dispatch management team will respond to this request by recording the case and assigning an ambulance. Then Ambulance crew who get this task will continue the rescue process.

Ambulance Crew App

For Ambulance Driver & Nurse/Doctor

From departure, transport process to arrival at the hospital, ambulance driver can update the ambulance time record using Ambulance Driver Mobile App. And the nurse can input and update patient vital sign data using PHC mobile app.



Ambulance Monitoring

For ER Room

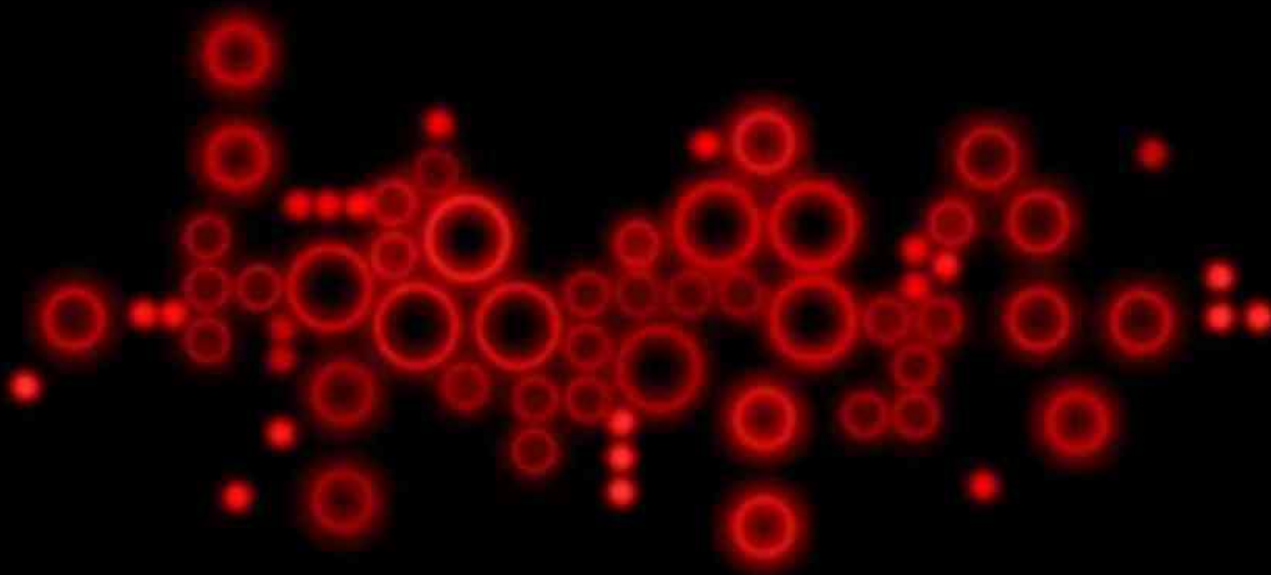
While emergency response team can also monitor all the process through Ambulance Monitoring, so that when the rescue team arrives, they can respond immediately.



Ambulance Portal

Other departments can also monitor all processes through the Ambulance Center Portal. The portal is also used to manage system configurations such as ambulance settings, schedules, employees, areas, etc., as well as to view reports.

IT SOLUTION FOR BETTER BUSINESS



PT. HalotecC Indonesia

HEAD OFFICE:

Rasuna Office Park Unit ZO-05
Kawasan Rasuna Epicentrum
Jl. HR Rasuna Said, Kuningan - Jakarta Selatan
12960 - Jakarta, Indonesia

BRANCH OFFICE:

Mandiri Building Medan, Lantai 5 - Unit 510
Jl. Imam Bonjol No. 16D, Kel. Petisah Tengah, Kec. Medan Petisah, Kota Medan
20112 - Sumatera Utara
Indonesia
Phone : +62 81 1618 2017

MALAYSIA REPRESENTATIVE:

Muhammad Said
Phone: +60 10 214 3368

For more information about us visit

<https://www.halotec-indonesia.com> | email: solution@halotec-indonesia.com